



**Peree Bouwadvies BV**

**the aim  
to  
Design**



## Peree Bouwadvies B.V.

Zutphenseweg 29<sup>D2</sup>,  
7418 AH Deventer (NL)  
Postbus 2097, 7420 AB Deventer (NL)  
Tel. +31- (0)570- 857400  
Fax +31- (0)570- 857439  
[www.peree.nl](http://www.peree.nl)

**Construction  
Consultants**

### Who we are and our aim:

Peree Bouwadvies B.V. is a multi disciplinary company specialized in structural design for building business.

The company was established in 1956, founded and led by engineers with passion for detail, cohesion, structure and environment.

Since already the early days, Peree developed to be a more than reliable partner for property developers, architects, contractors, institutional investors and governmental institutes.

Offering complementary services such as building physics, estimating and budgeting, and fully detailed working specifications.

An inspiring, enthusiastic, highly educated team of draughtsmen, structural engineers and consultants form the core of our organisation, where the quality of our advice as well as a customer-oriented approach take centre stage.

With over 50 years of experience, Peree is a constructive, inspiring and proactive partner, with the aim to provide the most cost optimized environmental sustainable solutions for now and the future.

Due to our multi cultural organisation and the ability to communicate in different languages, we manage our projects in Europe, the Caribbean and the African continent.

All assignments are accepted and executed according to the rules and fees contained in the 'Regulation Relationship between Client and consulting engineer' (RVOI 1987/1998/2001) or Legal relationship client - architect, engineer and consultant DNR 2005 (The New Rules 2005).  
This letter is only sent to the recipient by letter or email.

Consultants in the field of utility,  
residential and civil engineering,  
foundation engineering and building  
physics.

Chamber of commerce	54088224
VAT number	851154797
Bank-account	NL38RABO0162547897
BIC	RABONL2U
Bank name	Rabobank groep



### **Structural design:**

For over 50 years, Peree Bouwadvies B.V. has been a reliable partner for clients including contractors, architects, developers, but also institutional investors, industry and private commissioning.

Peree Bouwadvies B.V. advocates a well thought through and efficient concept, which not only centres on the demand, but also feasibility.

A good start determined the success of the project.

It is exactly because of our expertise and experience that we strive to include this contribution early in the process. Indeed, the technical conditions are determined and shaped in specifications, and the design draft.

The reduction of the chance of failure by means of integral advice, chain collaboration and sustainable future-focused design, this is what characterises Peree Bouwadvies B.V.

---



---

## BIM

BIM stands for: Building Information Modelling.

During a design, different parties work together towards the final result.

The roles and responsibilities of these parties shift regularly.

The environment is also in constant flux.

The large amount of parties and data within a project and the dynamic thereof creates a significant chance of failure costs.

BIM is the solution that ensures that all relevant information is stored, used and managed during the entire process in a digital (3D) building model. All parties involved in the construction process work with the same information and thus see what each is doing. As such, the information is constantly available and always up to date. In the automotive and aerospace industry, similar methods and information storage has been successfully applied for a long time.

Since 2006, Peree Bouwadvies B.V. works integrally by means of SCIA Esa Engineer and Allplan, with the aim to reduce the chance of failure, and to improve the process. Allplan is exchangeable by means of IFC with standard packages, including Revit.

---





---

### Construction supervision

Clients acknowledge the added value of supervision of the execution as a guarantee of quality and safety to an increasing extent.

By means of structural, and also randomised, inspections of the execution, people are able to significantly reduce the chance of failure, which has a positive impact on the building costs while retaining quality and safety.

Peree Bouwadvies B.V. possesses significant expertise in the area of architecture as well as construction.

If so desires, this supervision can take place for internal as well as external projects on location and with suppliers.

---



---

### **Sustainable design.**

As structural designers, we play an important role in the area of sustainable design, materialisation and solutions.

Our designers are searching for the optimum between design, cost and environmental impact.

The functional role consists of designing a main supportive structure which offers maximum flexibility in terms of use for the present and future of the building.

In the area of technology, we can make an impact in various ways.

---



## **Fields of constructions**

---

### **Schools**

The dynamic society especially presents its character in the multiplicity of education.

Where a few years ago, an elementary school and regular high school and secondary education were common, nowadays numerous types of education and institutions have emerged.

Good development starts especially in this sector with a clear demand and a clear Programme of Demands (PoD), from which an aesthetic and technical mould can be created.

In this area Peree Bouwadvies B.V. has also been an important partner for years, in terms of building constructions and building physics for developer, builder and end users.

---

### **(Heavy) Industry**

Peree Bouwadvies B.V. has extensive experience in both the design and the engineering of industrial projects.

Especially the industrial design is characterised by the fact that the construction and architectural design is subordinate to the industrial process.

Both the design and the engineering of pipe bridges, halls, transshipment warehouses and bulk provisions to the benefit of the agro-industry and the petro-chemical industry, amongst others, belong to our work activities.

---



## **Office buildings**

Especially during the preparation and the development of utility buildings such as office buildings, Peree Bouwadvies B.V. distinguishes itself as a pro-active and inspirational partner for process developers, architects and contractors, as well as institutional investors such as banks and investment companies.

Subject to the construction advice, we are used to collaborating in the functional design and the added value of the development.

---

## **Parking garages**

(multi-storey and underground structures)

During the last few years, Peree Bouwadvies has developed into a reliable partner of HUBER car park systems Rheinbrohl. The parking garages are mainly built in the United Kingdom and the Netherlands.

Peree Bouwadvies designed multi storey carparks as well underground parking garages beneath groundwater level.

---



---

### Precast design.

(complete skeleton and detailed design)

For years, Peree Bouwadvies B.V. has been a reliable partner in the engineering of prefabricated constructions. This includes the development of prefabricated parts from partial constructions, up to the engineering of entire hulls. For this engineering we use software of ALLPLAN, amongst others, which enables us to develop various projects in full 3D and where necessary by means of BIM. By means of IFC document exchange we are compatible with almost every renowned software supplier.

---

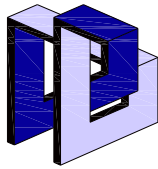
### Housing design.

To the benefit of new-build, reconstruction, renovation and system development, for years Peree Bouwadvies B.V. has been a partner for private as well as professional clients.

Based on our expertise as constructor, construction physicist or architect, the design plan can be supervised in detail from design up to execution.

In this way, Peree Bouwadvies B.V. is capable to complete all facets in accordance with your desires, by means of 'design and construct' consultancy.

---



## Peree Bouwadvies B.V.

Zutphenseweg 29<sup>D2</sup>,  
7418 AH Deventer (NL)  
Postbus 2097, 7420 AB Deventer (NL)  
Tel. +31- (0)570- 857400  
Fax +31- (0)570- 857439  
[www.peree.nl](http://www.peree.nl)

**Construction  
Consultants**

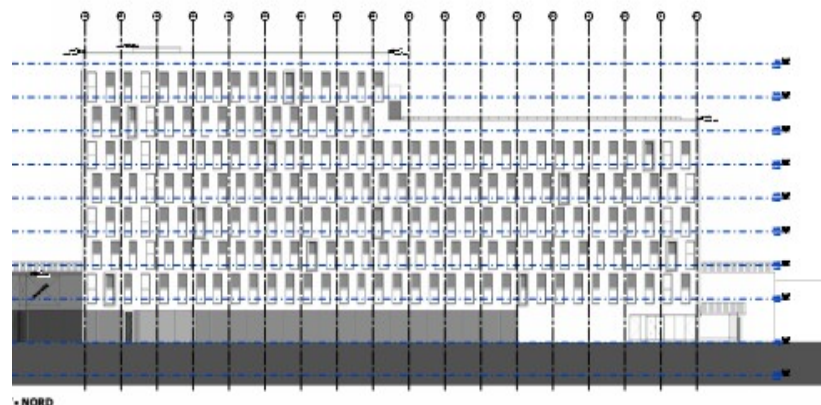
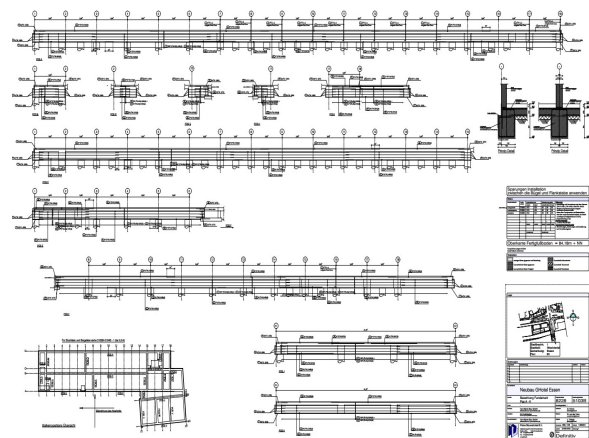
Project : Hotel Essen Germany  
Project type : Hotels  
Location : Essen Germany  
Delivered : 2016  
Client : van Wijnen

### Algemeen:

Commissioned by the van Wijnen Germany, Peree is awarded being leading engineer for the structural design of GHOTEL Essen -Germany-.

The hotel is located in the centre of the city Essen Germany.

The structure is based on pilefoundation, precast concrete, on site poured concrete and composites.



All orders are accepted and executed according to the rules and fees contained in the 'Regulation Relationship between Client and consulting engineer' (RVOI 1987/1998/2001) or Legal relationship client - architect, engineer and consultant DNR 2005 (The New Rules 2005).  
This letter is only sent to the recipient by email.

Consultants in the field of utility, residential and civil engineering, foundation engineering and building physics.

Chamber of commerce 54088224  
VAT number 851154797  
Bank-account NL38rabo0162547897  
BIC RABONL2U  
Bank name Rabobank groep



## Peree Bouwadvies B.V.

Zutphenseweg 29<sup>02</sup>,  
7418 AH Deventer (NL)  
Postbus 2097, 7420 AB Deventer (NL)  
Tel. +31- (0)570- 857400  
Fax +31- (0)570- 857439  
[www.peree.nl](http://www.peree.nl)

**Construction  
Consultants**

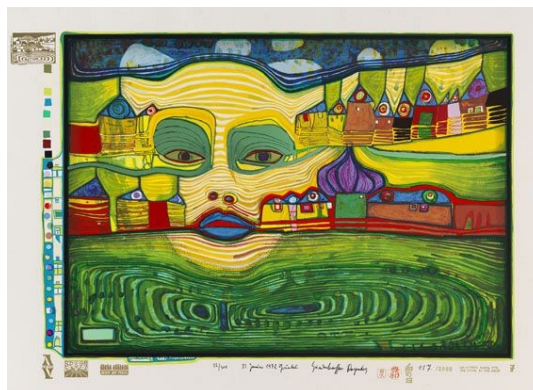
Project : Hundertwasser  
Project type : Healthcare  
Location : Zoeterwoude  
Delivered : 2019-2020  
Client : Gemiva

### General:

Commissioned by the healthcare company Gemiva Gouda, Peree is awarded being leading engineer for the total structure of the Hundertwasser project.

The project will be used as day-care for multiple disabled people, and is designed on the ideology of the Architect Friedrich Hundertwasser.

The project will be build in a conventional way, using precast concrete, Peikko Beams and composite columns

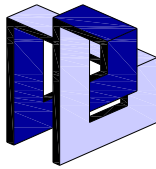


All orders are accepted and executed according to the rules and fees contained in the 'Regulation Relationship between Client and consulting engineer' (RVOI 1987/1998/2001) or Legal relationship client - architect, engineer and consultant DNR 2005 (The New Rules 2005).  
This letter is only sent to the recipient by email.

Consultants in the field of utility, residential and civil engineering, foundation engineering and building physics.

Chamber of commerce 54088224  
VAT number 851154797  
Bank-account NL38rabo0162547897  
BIC RABONL2U  
Bank name Rabobank groep





## Peree Bouwadvies B.V.

Zutphenseweg 29<sup>02</sup>,  
7418 AH Deventer (NL)  
Postbus 2097, 7420 AB Deventer (NL)  
Tel. +31- (0)570- 857400  
Fax +31- (0)570- 857439  
[www.peree.nl](http://www.peree.nl)

**Construction  
Consultants**

Project : Parking IKEA  
Location : Utrecht  
Delivered : 2012  
Client : Holcon / ASK Romein  
Size :  $\pm 88000 \text{ m}^2$ ,  $61000 \text{ m}^2$  parking and en  $27000 \text{ m}^2$  accommodation

### General

Commissioned by Holcon Ask Romein, Peree was asked to design the concrete construction of the carpark system for IKEA, with a size of  $61000 \text{ m}^2$ .  
Speciality for this construction were the soccer field on top of the car-park.  
The soccer-fields are designed for concert- dynamic loads as own frequency as well.

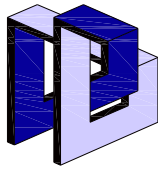


All orders are accepted and executed according to the rules and fees contained in the 'Regulation Relationship between Client and consulting engineer' (RVOI 1987/1998/2001) or Legal relationship client - architect, engineer and consultant DNR 2005 (The New Rules 2005).

This letter is only sent to the recipient by email.

Consultants in the field of utility, residential and civil engineering, foundation engineering and building physics.

Chamber of commerce	54088224
VAT number	851154797
Bank-account	NL38rabo0162547897
BIC	RABONL2U
Bank name	Rabobank groep



## Peree Bouwadvies B.V.

Zutphenseweg 29<sup>02</sup>,  
7418 AH Deventer (NL)  
Postbus 2097, 7420 AB Deventer (NL)  
Tel. +31- (0)570- 857400  
Fax +31- (0)570- 857439  
[www.peree.nl](http://www.peree.nl)

**Construction**  
**Consultants**

Project : 40.000 housing units Angola  
Projecttype : Social housing  
Locatie : Angola  
Delivered : 2011 ongoing  
Client : AAC Africa  
Architect : Giora Gur / Tel Aviv – Jaime Lerner Brasil

### General:

Commissioned by AAC Afica, Peree is awarded being structural engineer for the Angola housing project.

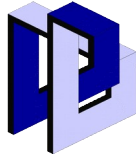
The appartments are built at several locations, spread over Angola, and based on AAC structures.



All orders are accepted and executed according to the rules and fees contained in the 'Regulation Relationship between Client and consulting engineer' (RVOI 1987/1998/2001) or Legal relationship client - architect, engineer and consultant DNR 2005 (The New Rules 2005).  
This letter is only sent to the recipient by email.

Consultants in the field of utility, residential and civil engineering, foundation engineering and building physics.

Chamber of commerce	54088224
VAT number	851154797
Bank-account	NL38rabo0162547897
BIC	RABONL2U
Bank name	Rabobank groep



## Peree Bouwadvies B.V.

Zutphenseweg 29<sup>02</sup>,  
7418 AH Deventer (NL)  
Postbus 2097, 7420 AB Deventer (NL)  
Tel. +31- (0)570- 857400  
Fax +31- (0)570- 857439  
[www.peree.nl](http://www.peree.nl)

**Construction**  
**Consultants**

Project : Affordable Housing Project Masaka  
Project type : Housing project  
Location : Masaka Rwanda  
Delivered : In process  
Client : Remote Group

### General:

Commissioned by the Remote Group, Peree is awarded being structural engineer for design of the large scale Housing project which is designed on the awarded AAC building system.

The design is based on Aerated- and reinforced concrete.  
Due to the region, the structure is designed on seismic forces.



All orders are accepted and executed according to the rules and fees contained in the 'Regulation Relationship between Client and consulting engineer' (RVOI 1987/1998/2001) or Legal relationship client - architect, engineer and consultant DNR 2005 (The New Rules 2005).  
This letter is only sent to the recipient by email.

Consultants in the field of utility, residential and civil engineering, foundation engineering and building physics.

Chamber of commerce	54088224
VAT number	851154797
Bank-account	NL38rabo0162547897
BIC	RABONL2U
Bank name	Rabobank groep





## Peree Bouwadvies B.V.

Zutphenseweg 29<sup>02</sup>,  
7418 AH Deventer (NL)  
Postbus 2097, 7420 AB Deventer (NL)  
Tel. +31- (0)570- 857400  
Fax +31- (0)570- 857439  
[www.peree.nl](http://www.peree.nl)

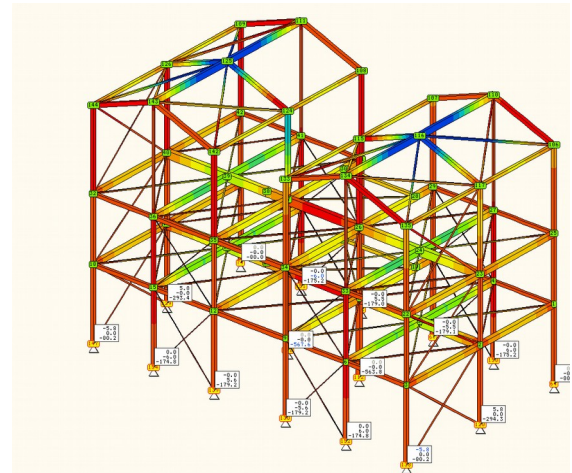
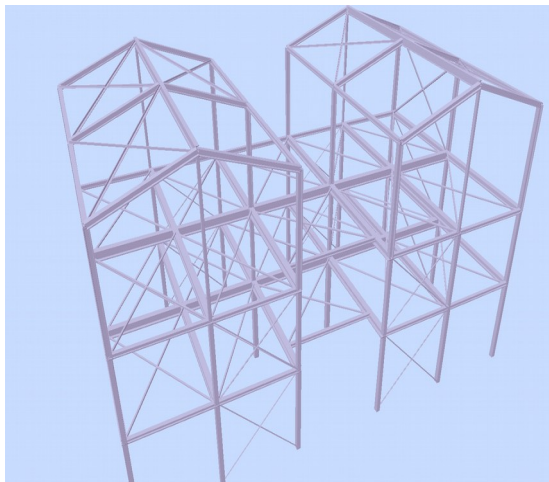
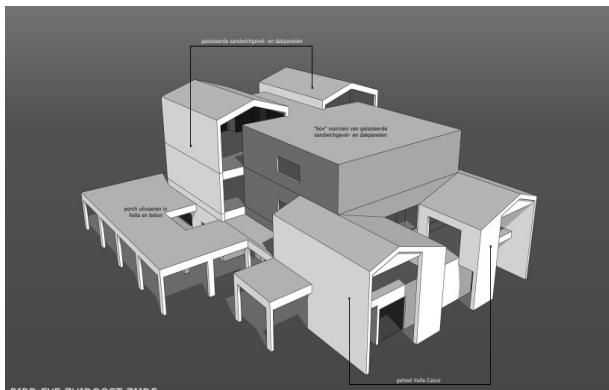
**Construction  
Consultants**

Project : Multifunctional Centre (MFC) Bonaire Caribbean  
Project type : Sport, Leisure and Beach resort  
Location : Kralingen  
Delivered : 2019  
Client : Delfins

### General:

Commissioned by Delfins, Peree is awarded being leading engineer for the structural design of the MFC, which is the first building at Bonaire in this type

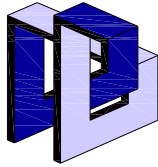
The design is based on composite steel-structure, and AAC- Ytong.  
Due to the region, the structure is designed on high wind impact.



All orders are accepted and executed according to the rules and fees contained in the 'Regulation Relationship between Client and consulting engineer' (RVOI 1987/1998/2001) or Legal relationship client - architect, engineer and consultant DNR 2005 (The New Rules 2005).  
This letter is only sent to the recipient by email.

Consultants in the field of utility, residential and civil engineering, foundation engineering and building physics.

Chamber of commerce 54088224  
VAT number 851154797  
Bank-account NL38rabo0162547897  
BIC RABONL2U  
Bank name Rabobank groep



## Peree Bouwadvies B.V.

Zutphenseweg 29<sup>02</sup>,  
7418 AH Deventer (NL)  
Postbus 2097, 7420 AB Deventer (NL)  
Tel. +31- (0)570- 857400  
Fax +31- (0)570- 857439  
[www.peree.nl](http://www.peree.nl)

**Construction  
Consultants**

Project : Zwaardemaker  
Project-type : New, renovation and restauration  
Location : Zaandam  
Delivering : 2009  
Client : Am  
Architect : -

### General:

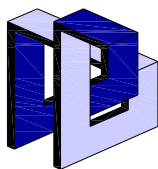
Commissioned by AM, Peree is awarded to beeing the leading structural designer of the renovation, restauration and newstructure of the “Zwaardemaker”  
The project was based to redesign an old factory in to new housings and new appartments as well.



All orders are accepted and executed according to the rules and fees contained in the 'Regulation Relationship between Client and consulting engineer' (RVOI 1987/1998/2001) or Legal relationship client - architect, engineer and consultant DNR 2005 (The New Rules 2005).  
This letter is only sent to the recipient by email.

Consultants in the field of utility, residential and civil engineering, foundation engineering and building physics.

Chamber of commerce	54088224
VAT number	851154797
Bank-account	NL38rabo0162547897
BIC	RABONL2U
Bank name	Rabobank groep



## Peree Bouwadvies B.V.

Zutphenseweg 29<sup>02</sup>,  
7418 AH Deventer (NL)  
Postbus 2097, 7420 AB Deventer (NL)  
Tel. +31- (0)570- 857400  
Fax +31- (0)570- 857439  
[www.peree.nl](http://www.peree.nl)

**Construction**  
**Consultants**

Project : Carpark systems  
Project type : Parking  
Location : United Kingdom  
Delivered : 2011-ongoing  
Client : Huber Carparksystems

### General:

Commissioned by Huber Carpark systems, Peree is awarded being structural designer for several carpark systems at the United Kingdom and Netherland.

The carpark systems are based on steel structure and composite floors, while the foundation is based on piles and/or plates.

The several carpark systems are based in London, Aberdeen, Manchester, Cambridge.

The end clients are Tesco, Hospitals as well as Warner Brothers.



3D View 01 - Aerial View

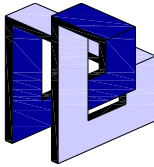
All orders are accepted and executed according to the rules and fees contained in the 'Regulation Relationship between Client and consulting engineer' (RVOI 1987/1998/2001) or Legal relationship client - architect, engineer and consultant DNR 2005 (The New Rules 2005).

This letter is only sent to the recipient by email.

Consultants in the field of utility, residential and civil engineering, foundation engineering and building physics.

Chamber of commerce 54088224  
VAT number 851154797  
Bank-account NL38rabo0162547897  
BIC RABONL2U  
Bank name Rabobank groep





## Peree Bouwadvies B.V.

Zutphenseweg 29<sup>02</sup>,  
7418 AH Deventer (NL)  
Postbus 2097, 7420 AB Deventer (NL)  
Tel. +31- (0)570- 857400  
Fax +31- (0)570- 857439  
[www.peree.nl](http://www.peree.nl)

**Construction  
Consultants**

Project : Village Centre  
Project type : Housing/ Leisure/ Schools/Parking  
Location : Amerongen  
Delivered : 2015  
Client : Housing cooperation

### General:

Commissioned by the social housing company- Amerongen, Peree is awarded being leading engineer for the total structure.

The project is meant as Village Centre, based on housing/ leisure/ parking/ schools, sport and medical centre.

The project is built in precast -detail designed by Peree as 3D BIM Model.



All orders are accepted and executed according to the rules and fees contained in the 'Regulation Relationship between Client and consulting engineer' (RVOI 1987/1998/2001) or Legal relationship client - architect, engineer and consultant DNR 2005 (The New Rules 2005).

This letter is only sent to the recipient by email.

Consultants in the field of utility, residential and civil engineering, foundation engineering and building physics.

Chamber of commerce 54088224  
VAT number 851154797  
Bank-account NL38rabo0162547897  
BIC RABONL2U  
Bank name Rabobank groep





## Peree Bouwadvies B.V.

Zutphenseweg 29<sup>02</sup>,  
7418 AH Deventer (NL)  
Postbus 2097, 7420 AB Deventer (NL)  
Tel. +31- (0)570- 857400  
Fax +31- (0)570- 857439  
[www.peree.nl](http://www.peree.nl)

**Construction  
Consultants**

Project : Water for all Angola  
Project type : Healthcare  
Location : Angola  
Delivered : 2016  
Client : AAC Africa

### General:

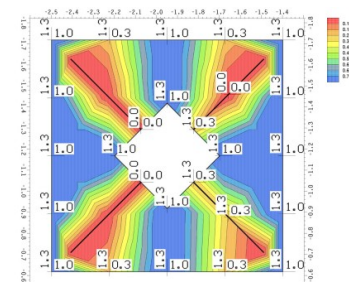
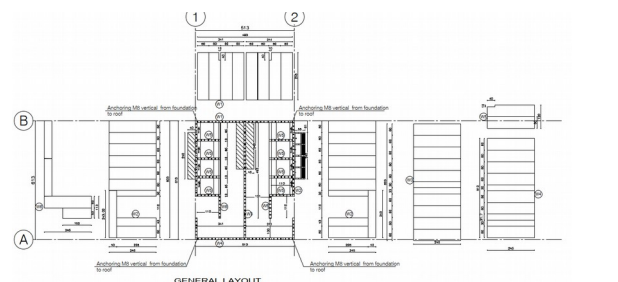
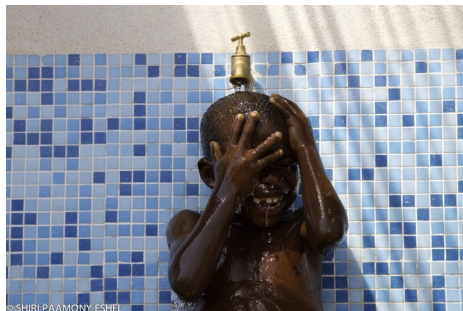
Peree was awarded by AAC Africa to deliver structural services regarding watermanagement for over more than 640.000 people in Angola

Roughly half the population in Angola does not currently have access to safe drinking water, and is forced to use unsafe water, leading to illness and death. This has significant adverse effects both on individuals and their families, as well as more broadly on the economy of Angola as a whole. Water For All (WFA) is a project undertaken to provide clean water to over 150 remote rural communities, with an expected positive effect beginning at the individual level through the village and all the way to the economy overall.

### The Result:

**Over 640,000 people in remote areas will gain access to clean purified drinking water.**

Their consequent improved health will result in a better quality of life and an improved local and national economy. Health to the individual means health to the population as a whole.



All orders are accepted and executed according to the rules and fees contained in the 'Regulation Relationship between Client and consulting engineer' (RVOI 1987/1998/2001) or Legal relationship client - architect, engineer and consultant DNR 2005 (The New Rules 2005).  
This letter is only sent to the recipient by email.

Consultants in the field of utility, residential and civil engineering, foundation engineering and building physics.

Chamber of commerce 54088224  
VAT number 851154797  
Bank-account NL38rabo0162547897  
BIC RABONL2U  
Bank name Rabobank groep



## Peree Bouwadvies B.V.

Zutphenseweg 29<sup>02</sup>,  
7418 AH Deventer (NL)  
Postbus 2097, 7420 AB Deventer (NL)  
Tel. +31- (0)570- 857400  
Fax +31- (0)570- 857439  
[www.peree.nl](http://www.peree.nl)

**Construction  
Consultants**

Project : Wembley Pink, Multi Storey Coach and Carpark  
Project type : MSCP  
Location : London  
Delivered : 2019  
Client : Huber Carpark systems Germany

### General:

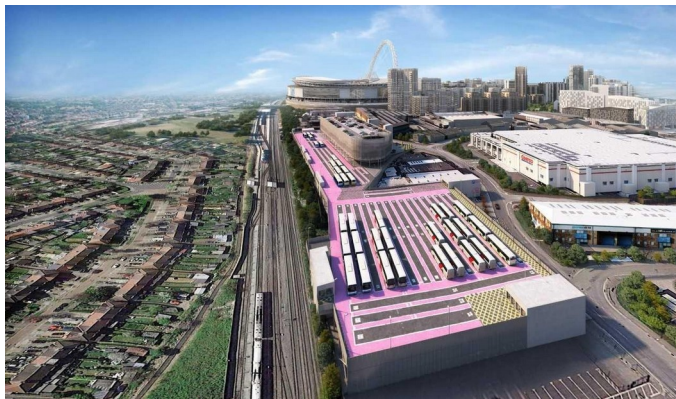
Commissioned by Huber Carpark Systems Rheinbrohl, Peree is awarded being leading engineer for the structural design of the Wembley Pink Stadium Car and Coachpark, which is the first MSCP build in Europe in this use and size.

The structure was designed for approximately 700cars and 300 dedicated places for coaches.

Following that, the capacity of this parking is approximately 17500 people.

During events, the first level will be used for international broadcast by BBC and other companies.

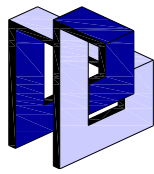
The design is based on composite steel-structures, and designed according to the Euro-Code with UK annex.



All orders are accepted and executed according to the rules and fees contained in the 'Regulation Relationship between Client and consulting engineer' (RVOI 1987/1998/2001) or Legal relationship client - architect, engineer and consultant DNR 2005 (The New Rules 2005).  
This letter is only sent to the recipient by email.

Consultants in the field of utility, residential and civil engineering, foundation engineering and building physics.

Chamber of commerce	54088224
VAT number	851154797
Bank-account	NL38rabo0162547897
BIC	RABONL2U
Bank name	Rabobank groep



## Peree Bouwadvies B.V.

Zutphenseweg 29<sup>02</sup>,  
7418 AH Deventer (NL)  
Postbus 2097, 7420 AB Deventer (NL)  
Tel. +31- (0)570- 857400  
Fax +31- (0)570- 857439  
[www.peree.nl](http://www.peree.nl)

**Construction  
Consultants**

Project : Delfins Beach resort  
Project type : Leisure and vacations  
Location : Bonaire Caribbean  
Delivered : 2014-ongoing  
Client : Delfins

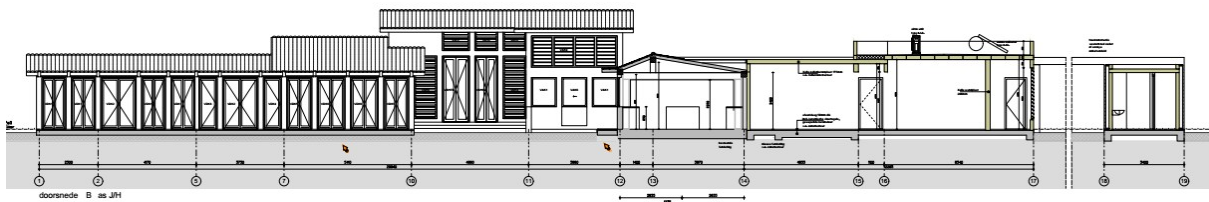
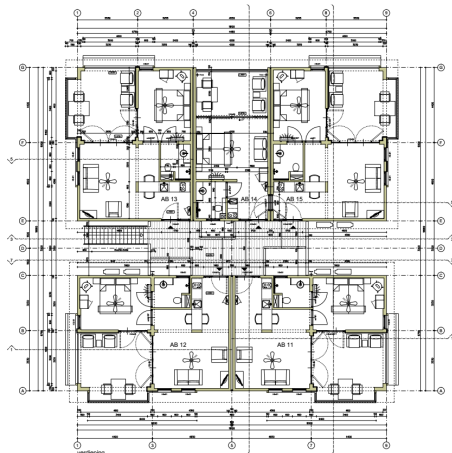
### General:

Commissioned by Delfins, Peree is awarded being leading structural designer for the Delfins Beach resort Bonaire at the Caribbean.

The project is direct located at the Caribbean see, approximately 100km from Venezuelan coast.

The project is based on concrete and aerated concrete as well.

The total project will completed in 2018, and will get several apartments, swimming pools, beach bar, café and restaurants.



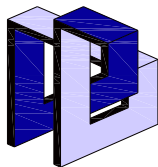
All orders are accepted and executed according to the rules and fees contained in the 'Regulation Relationship between Client and consulting engineer' (RVOI 1987/1998/2001) or Legal relationship client - architect, engineer and consultant DNR 2005 (The New Rules 2005).

This letter is only sent to the recipient by email.

Consultants in the field of utility, residential and civil engineering, foundation engineering and building physics.

Chamber of commerce 54088224  
VAT number 851154797  
Bank-account NL38rabo0162547897  
BIC RABONL2U  
Bank name Rabobank groep





## Peree Bouwadvies B.V.

Zutphenseweg 29<sup>D2</sup>,  
7418 AH Deventer (NL)  
Postbus 2097, 7420 AB Deventer (NL)  
Tel. +31- (0)570- 857400  
Fax +31- (0)570- 857439  
[www.peree.nl](http://www.peree.nl)

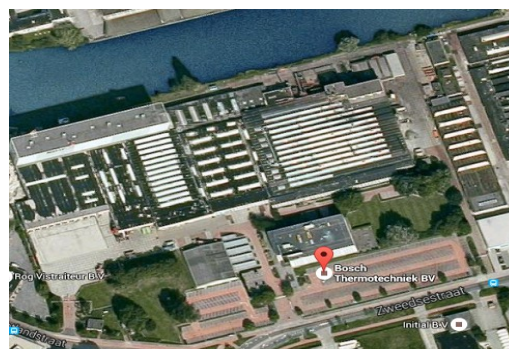
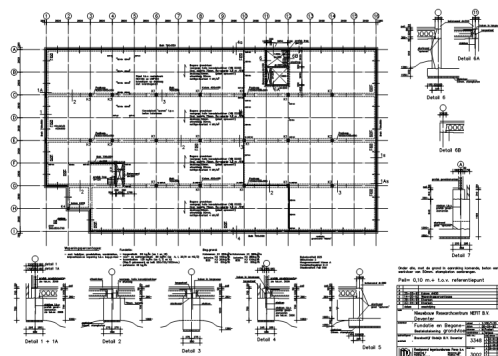
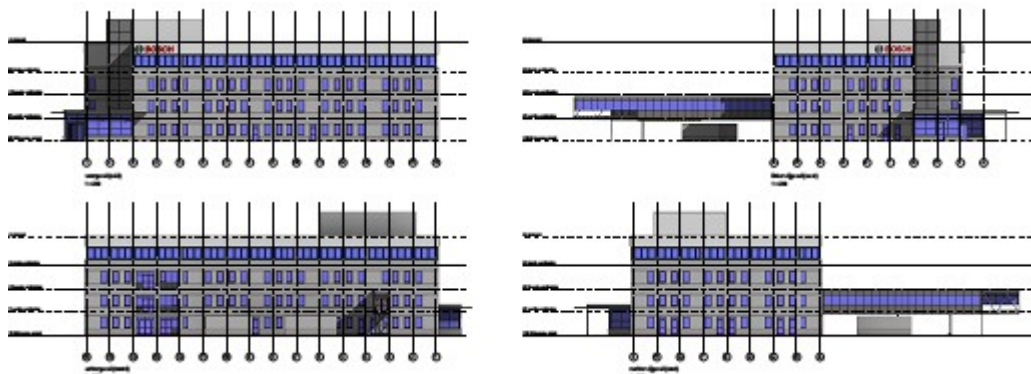
**Construction  
Consultants**

Project : Bosch Deventer  
Project-type : Industry  
Location : Deventer  
Delivering : 1992-2017- Ongoing  
Client : Bosch Nefit / van Wijnen  
Architect : -

### General:

Commissioned by Bosch, Peree is awarded to be leading structural designer of the building for product development and production.  
The project is ongoing, first commissioned since 1992.

The scoop is based on being leading designer for the piling foundations, steel structures/ trusses, precast construction and on site concrete constructions.



All orders are accepted and executed according to the rules and fees contained in the 'Regulation Relationship between Client and consulting engineer' (RVOI 1987/1998/2001) or Legal relationship client - architect, engineer and consultant DNR 2005 (The New Rules 2005).  
This letter is only sent to the recipient by email.

Consultants in the field of utility, residential and civil engineering, foundation engineering and building physics.

Chamber of commerce 54088224  
VAT number 851154797  
Bank-account NL38rabo0162547897  
BIC RABONL2U  
Bank name Rabobank groep



## Peree Bouwadvies B.V.

Zutphenseweg 29<sup>D2</sup>,  
7418 AH Deventer (NL)  
Postbus 2097, 7420 AB Deventer (NL)  
Tel. +31- (0)570- 857400  
Fax +31- (0)570- 857439  
[www.peree.nl](http://www.peree.nl)

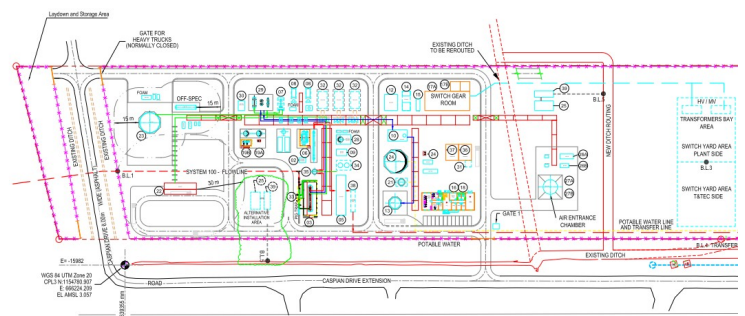
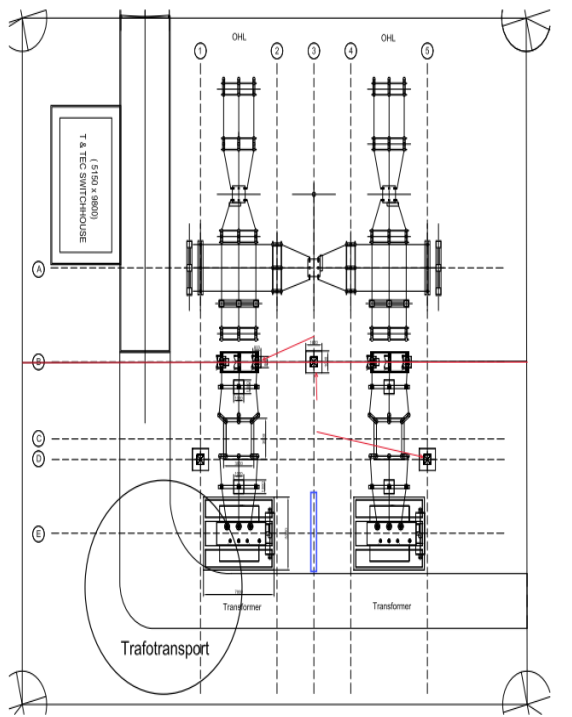
**Construction  
Consultants**

Project : PROMAN ST 66KV HYPACT TRINIDAD DENOVO PROJECT  
Project type : Power center  
Location : Trinidad  
Delivered : 2018  
Client : General Electric

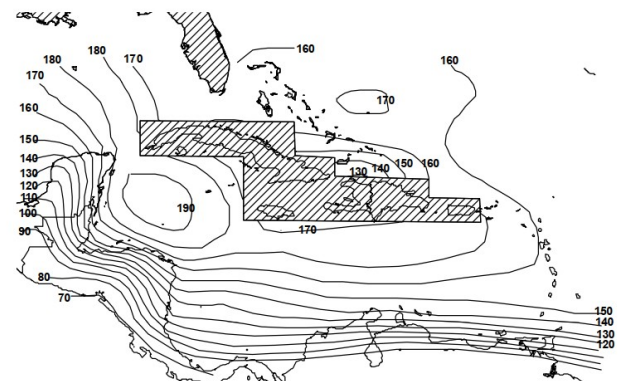
### General:

Commissioned by General Electric, Peree is awarded being leading engineer for the structural design at the Proman 66 KV Hypact powercenter.

The structure was designed on windspeed up tp 200 km/h, foundation based on piles.  
The design was furthermore based on the American Standard ASCE7-5 and the IBC



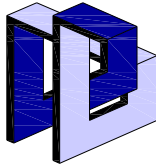
### 700 Year Wind Speeds for Caribbean



All orders are accepted and executed according to the rules and fees contained in the 'Regulation Relationship between Client and consulting engineer' (RVOI 1987/1998/2001) or Legal relationship client - architect, engineer and consultant DNR 2005 (The New Rules 2005).  
This letter is only sent to the recipient by email.

Consultants in the field of utility, residential and civil engineering, foundation engineering and building physics.

Chamber of commerce 54088224  
VAT number 851154797  
Bank-account NL38rabo0162547897  
BIC RABONL2U  
Bank name Rabobank groep



## Peree Bouwadvies B.V.

Zutphenseweg 29<sup>02</sup>,  
7418 AH Deventer (NL)  
Postbus 2097, 7420 AB Deventer (NL)  
Tel. +31- (0)570- 857400  
Fax +31- (0)570- 857439  
[www.peree.nl](http://www.peree.nl)

**Construction**  
**Consultants**

Project : European Space Agency - ESA  
Project type : Laboratories – Centrifuge- Officebuildings  
Location : Noordwijk  
Delivered : 2008  
Client : MBN

### General:

Commissioned by the MBN Germany, Peree is awarded being engineer for the structural design of several laboratories, office buildings and research centre.  
Specialty in this occasion is the centrifuge and seismic-blocks meant for testing satellites.  
The foundation of the structure is made by piling, while the upper structure is based on precast-concrete, steel and reinforced in location poured concrete



All orders are accepted and executed according to the rules and fees contained in the 'Regulation Relationship between Client and consulting engineer' (RVOI 1987/1998/2001) or Legal relationship client - architect, engineer and consultant DNR 2005 (The New Rules 2005).

This letter is only sent to the recipient by email.

Consultants in the field of utility, residential and civil engineering, foundation engineering and building physics.

Chamber of commerce	54088224
VAT number	851154797
Bank-account	NL38rabo0162547897
BIC	RABONL2U
Bank name	Rabobank groep





## Peree Bouwadvies B.V.

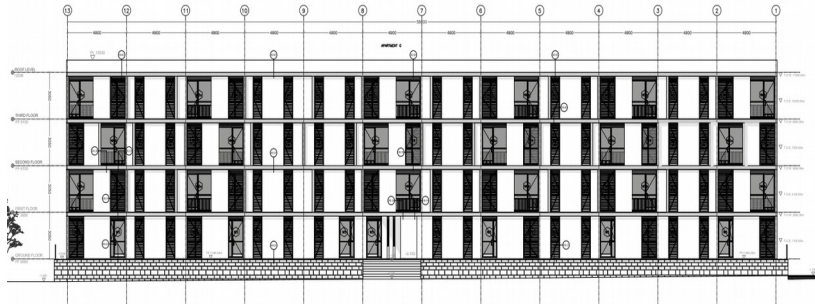
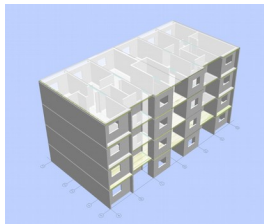
Zutphenseweg 29<sup>D2</sup>,  
7418 AH Deventer (NL)  
Postbus 2097, 7420 AB Deventer (NL)  
Tel. +31- (0)570- 857400  
Fax +31- (0)570- 857439  
[www.peree.nl](http://www.peree.nl)

**Construction  
Consultants**

Project : Track record Peree Bouwadvies BV  
Project type : Aerated Concrete designed Project  
Location : Europe / Africa / Caribbean  
Delivered : 1990 - ongoing  
Client : Development corporations/ contractors

### General:

Since the early days of the company, Peree focused also on special systems as for instance structural designed AAC Systems, and therefore became a reliable partner for development corporations, contractors and investors, designing through the years more over than 50000 housings in different countries and building cultures.



All orders are accepted and executed according to the rules and fees contained in the 'Regulation Relationship between Client and consulting engineer' (RVOI 1987/1998/2001) or Legal relationship client - architect, engineer and consultant DNR 2005 (The New Rules 2005).  
This letter is only sent to the recipient by email.

Consultants in the field of utility, residential and civil engineering, foundation engineering and building physics.

Chamber of commerce 54088224  
VAT number 851154797  
Bank-account NL38rabo0162547897  
BIC RABONL2U  
Bank name Rabobank groep





## AAC related projects

Year	Projectnr	Project	country	System
29-10-96	4740	33 WOHNUNGEN 2 PHASE BACKUMERTAL ZU HERTEN (97.018)	Germany	Aerated Concrete Panelsystem
05-12-96	4768	77 WONINGEN LUDWIGSHAFEN (96.158) PARACELUSSTRASSE	Germany	Aerated Concrete Panelsystem
09-12-96	4769	44 WOHNUNGEN KOLN-BR_HL 1 BA WOHNWERTPARK (96.078)	Germany	Aerated Concrete Panelsystem
09-12-96	4770	13 WOHNUNGEN CASTROP MARIENSTRASSE (96.147)	Germany	Aerated Concrete Panelsystem
09-12-96	4771	8 WOHNUNGEN BOCHUM WIEMELHAUSERSTRASSE (96.151)	Germany	Aerated Concrete Panelsystem
09-12-96	4772	15 + 4 WOHNUNGEN HERNE THIESSTRASSE (96.152)	Germany	Aerated Concrete Panelsystem
09-12-96	4773	14 (28) WOHNUNGEN ESSEN-SCHONEBECK (96.155)	Germany	Aerated Concrete Panelsystem
09-12-96	4774	21 WOHNUNGEN GLADBECK KLOPPSTOCKSTRASSE (96.166)	Germany	Aerated Concrete Panelsystem
13-03-97	4852	BAUVORHABEN "IM KLEEKAMP" ZU HAMM (97-020)	Germany	Aerated Concrete Panelsystem
07-07-97	4938	11 WOHNUNGEN DORTMUND-MENGEDE AMMERSTRASSE (97.066)	Germany	Aerated Concrete Panelsystem
08-10-97	4998	59 (+ 2) EFH BIESDORF S_D, BLOCK 55 BERLIN (97)	Germany	Aerated Concrete Panelsystem
17-10-97	5009	8 EFH AM RAHMER WALD DORTMUND (97-088)	Germany	Aerated Concrete Panelsystem
20-10-97	5010	CONSTRUCTIEWIJZE WONINGTYPE AQUARIUS I ALG./GARTENHAUS	Germany	Aerated Concrete Panelsystem
22-10-97	5011	10 EFH WICKEDER-RUHR IM OHL (97-097)	Germany	Aerated Concrete Panelsystem
19-11-97	5028	21 EFH CASTROP-RAUXEL 4 BA (97-081)	Germany	Aerated Concrete Panelsystem
01-12-97	5040	10 EFH IM OHL 2 BA, WICKEDE (97.115)	Germany	Aerated Concrete Panelsystem
01-12-97	5041	11 EFH DORTMUND MENGEDE, K_THE-KOLLWITZ STRASSE (97.08	Germany	Aerated Concrete Panelsystem
01-12-97	5042	8 EFH CASTROP-RAUXEL, HEDWIGSTRASSE (97.114)	Germany	Aerated Concrete Panelsystem
01-12-97	5043	4 EFH BOCHUM, EMILSTRASSE (97.116)	Germany	Aerated Concrete Panelsystem
11-12-97	5063	8 DOPPELHAUSER IN KIRCHHUNDEM, WELSCHEN-ENNEST	Germany	Aerated Concrete Panelsystem
11-12-97	5064	8 EFH IN OLPE? (ARCHITEKT JOSEF ARENS)	Germany	Aerated Concrete Panelsystem
14-01-98	5073	EFH ELMISHORN KALTENWEIDE	Germany	Aerated Concrete Panelsystem
03-02-98	5091	49 WOHNUNGEN BR_HL 2BA (VEBA 253300 - PLANNON 98.018)	Germany	Aerated Concrete Panelsystem
10-02-98	5094	6 WOHNUNGEN RECKLINGHAUSEN MARIENBURGERSTRASSE (256100	Germany	Aerated Concrete Panelsystem
18-02-98	5100	61 WOHNUNGEN BV LEIPZIG-PROBSTHEIDA (565800-98.030)	Germany	Aerated Concrete Panelsystem
18-02-98	5101	10 EFH GELSCHENKIRCHEN-BUER ROSENSTRASSE (256200-98.02	Germany	Aerated Concrete Panelsystem
18-02-98	5102	6 EF DOPPELHAUSH_LFTE D_SSELDORF AM M_NCHGRABEN (90015	Germany	Aerated Concrete Panelsystem
02-03-98	5112	22 WOHNUNGEN BOCHUM EVERSTALSTRA_E (251900-98.032)	Germany	Aerated Concrete Panelsystem
06-03-98	5118	6 WOHNUNGEN BOTTROP AUGUST-SCHMIDT-WEG (255500-98.035)	Germany	Aerated Concrete Panelsystem
17-03-98	5124	20 EFH BAUVORHABEN ESSEN-KRAY (LEITH) (257200-.....)	Germany	Aerated Concrete Panelsystem
26-03-98	5133	BEREKEN STAALCONSTRUCTIE WONING FAM DEYL (97.108)	Germany	Aerated Concrete Panelsystem
26-03-98	5134	8 WOHNUNGEN SAARNER KUPPE II IN MUHLHEIM (246000-....)	Germany	Aerated Concrete Panelsystem
08-04-98	5143	15 WOHNUNGEN SCHWABENSTRASSE MARL (255900-98.038)	Germany	Aerated Concrete Panelsystem



## AAC related projects

Year	Projectnr	Project	country	System
08-04-98	5144	15 WOHNUNGEN MERSEBURGERWEG MARL (249800-98.037)	Germany	Aerated Concrete Panelsystem
14-04-98	5148	52 WOHNUNGEN WOHNPARC TAUERNALLEE BERLIN (566500-.....)	Germany	Aerated Concrete Panelsystem
20-04-98	5155	12 EFH PRINZ-REGENT-STRASSE BOCHUM-WEITMAR (255400-....)	Germany	Aerated Concrete Panelsystem
20-04-98	5156	29 WOHNUNGEN HAMM-WERRIES EICHENSTRASSE (252400-.....)	Germany	Aerated Concrete Panelsystem
12-05-98	5180	5 EFH CASTROP-RAUXEL, HEDWIGSTRASSE, 8 BA, (253900)	Germany	Aerated Concrete Panelsystem
25-05-98	5190	9 EFH ARMINENSTRASSE CASTROP-RAUXEL (256000-.....)	Germany	Aerated Concrete Panelsystem
26-05-98	5193	6 EFH MUHLHEIM SAARNER KUPPE II 3BA (245900-98-071)	Germany	Aerated Concrete Panelsystem
29-05-98	5201	31 EFH 1BA LINDEN BOCHUM (566100-98.073)	Germany	Aerated Concrete Panelsystem
04-06-98	5205	6 EFH M_MULHEIM SAARNER KUPPE, BA A1 (242600-.....)	Germany	Aerated Concrete Panelsystem
05-06-98	5206	12 EFH GELSCHENKIRCHEN-UCKENDORF OSTPREU_ENSTR (258500)	Germany	Aerated Concrete Panelsystem
12-06-98	5209	18 EFH PROJEKT LUNEN WETHMARMARK (.....)	Germany	Aerated Concrete Panelsystem
15-06-98	5210	4 EFH AGIDISTRASSE IN BOTTROP (261100-.....)	Germany	Aerated Concrete Panelsystem
16-06-98	5213	18 EFH CASTROP-RAUXEL 7 BA 1.TEIL (253800-98.066)	Germany	Aerated Concrete Panelsystem
03-07-98	5225	12(30) EFH LUDWIGSHAFEN-OGGERSHEIM 2BA 1 TEIL (256600)	Germany	Aerated Concrete Panelsystem
10-07-98	5232	23 EFH EVERSTALSTRASSE BOCHUM 2 BA (251900-98032)	Germany	Aerated Concrete Panelsystem
04-08-98	5237	6 EFH BRUCHSTRASSE SCHWERTE (254200)	Germany	Aerated Concrete Panelsystem
25-08-98	5242	9 EFH KORNBLUMENWEG BACKUMERTAL HERTEN (257700)	Germany	Aerated Concrete Panelsystem
03/09/1998	5253	5 MFH DORTMUND-MENGEDE EUGEN-RICHTERSTRASSE (903033)	Germany	Aerated Concrete Panelsystem
03/09/1998	5257	6 EFH LUDWIGSHAFEN-OGGERSHEIM BA 2 2.25/2.30 (256600)	Germany	Aerated Concrete Panelsystem
09/09/1998	5263	6 EFH MARIENSTRASSE CASTROP-RAUXEL 6 BA (253700-98068)	Germany	Aerated Concrete Panelsystem
10/09/1998	5265	4 EFH MULHEIM SAARNER KUPPE II 5 BA (246100)	Germany	Aerated Concrete Panelsystem
25/09/1998	5283	107 EFH WOHNWERTPARK ZOLLVEREIN ESSEN (243600)	Germany	Aerated Concrete Panelsystem
09/10/1998	5292	4 EFH BAUVORHABEN HERNE MEMELER STRASSE (261400)	Germany	Aerated Concrete Panelsystem
09/10/1998	5293	29 EFH BAUVORHABEN HERNE AM FREIBAD (262200)	Germany	Aerated Concrete Panelsystem
09/10/1998	5294	4 EFH BV BOCHUM BEBAU. MUSTERHAUSPARK PAUSTR-/STOODTSTR.(250	Germany	Aerated Concrete Panelsystem
19/10/1998	5304	16 (7+9) EFH BV BACKUMER TAL HERTEN, 1BA, TEIL 2 (257800)	Germany	Aerated Concrete Panelsystem
03/11/1998	5323	112 EFH SCHWARTENSEEKAMP MOORWEG WEDEL (260100)	Germany	Aerated Concrete Panelsystem
04/11/1998	5325	12 EFH KORNBLUMENWEG BACKUMERTAL HERTEN 1 BA, TEIL 3 (257900)	Germany	Aerated Concrete Panelsystem
09/11/1998	5329	18 EFH BV HERNE EICHENDORFSTRASSE (258400)	Germany	Aerated Concrete Panelsystem
10/11/1998	5330	6 EFH CASTROP-RAUXEL HEDWIGSTRASSE 8 BA (253900)	Germany	Aerated Concrete Panelsystem
20/11/1998	5343	25 EFH WITTEN AM BUSCHE (264900)	Germany	Aerated Concrete Panelsystem
26/11/1998	5348	6 EFH PULTDACHHAUS BA A1/A4/A5 SAARNER KUPPE II MULHEIM (.....)	Germany	Aerated Concrete Panelsystem
30/11/1998	5350	3 EFH BV BOCHUM ROSENDELLE (260600)	Germany	Aerated Concrete Panelsystem





## AAC related projects

Year	Projectnr	Project	country	System
30/11/1998	5351	8 EFH BV BOCHUM HATTINGERSTRASSE 267 (258700)	Germany	Aerated Concrete Panelsystem
04/12/1998	5354	5 EFH BV MULHEIM SAARNER KUPPE II BA A2 (245800)	Germany	Aerated Concrete Panelsystem
04/12/1998	5355	2 MUSTERHAUSER BONN WOHNWERTPARK MARIA-MONTESSORI (90020)	Germany	Aerated Concrete Panelsystem
11/12/1998	5359	28 EFH BV BOCHUM CASTROPER HELLWEG (263600)	Germany	Aerated Concrete Panelsystem
11/12/1998	5360	240 EFH BV HANAU, KLEIN AUHEIM (255600)	Germany	Aerated Concrete Panelsystem
11/12/1998	5361	12 EFH BV LUDWIGSHAFEN-OGGERSHEIM BA2 HAUS 2.1-2.12 (256600)	Germany	Aerated Concrete Panelsystem
15/12/1998	5364	20 EFH BV SCHWERTE BRUCHSTRASSE (263800)	Germany	Aerated Concrete Panelsystem
11/01/1999	5374	5 EFH BV LUDWIGSHAFEN-OGGERSHEIM 3 BA (262300)	Germany	Aerated Concrete Panelsystem
14/01/1999	5377	6 (2+4) EFH DORTMUND TAUENTZIEN/GROSSBEERENSTRASSE (254500)	Germany	Aerated Concrete Panelsystem
15/01/1999	5378	12 EFH BV WOHNWERTPARK BRUHL 3 BA (266800)	Germany	Aerated Concrete Panelsystem
15/01/1999	5379	9 EFH BV WOHNWERTPARK BRUHL 4 BA (267000)	Germany	Aerated Concrete Panelsystem
21/01/1999	5384	7 EFH BV SAARNER KUPPE II MULHEIM/RUHR BA B - AB1 (246300)	Germany	Aerated Concrete Panelsystem
09/02/1999	5398	24 EFH BV BOCHUM WOHNWERTPARK LINDEN 2BA-TEIL (566100)	Germany	Aerated Concrete Panelsystem
11/02/1999	5403	4 EFH BV BOTTROP FICHTESTRASSE (261300)	Germany	Aerated Concrete Panelsystem
05/03/1999	5418	4 EFH BV MULHEIM SAARNER KUPPE II BA AB2 (246200)	Germany	Aerated Concrete Panelsystem
09/03/1999	5421	16 EFH BV DORTMUND-OESTRICH SCHARENHOF (271800)	Germany	Aerated Concrete Panelsystem
15/03/1999	5434	14 EFH BV HERTEN AM STEINACKER/BERTLICHER BLATT (265700)	Germany	Aerated Concrete Panelsystem
18/03/1999	5436	18 EFH BV DORTMUND-MENGEDE EUGEN RICHTERSTRASSE (269100)	Germany	Aerated Concrete Panelsystem
24/03/1999	5448	13 EFH BV BOTTROP HULS-GELANDE I (280009)	Germany	Aerated Concrete Panelsystem
24/03/1999	5449	12 EFH BV GELSENKIRCHEN OSTPREUSSENSTRASSE I (.....)	Germany	Aerated Concrete Panelsystem
25/03/1999	5451	8 EFH BV GLADBECK GOERLITZERSTRASSE (280021)	Germany	Aerated Concrete Panelsystem
25/03/1999	5452	14 EFH BV BOTTROP HULS-GELANDE II (.....)	Germany	Aerated Concrete Panelsystem
25/03/1999	5453	6 EFH BV BOTTROP LIEBRECHTSTRASSE (.....)	Germany	Aerated Concrete Panelsystem
25/03/1999	5454	20 EFH BV GELSENKIRCHEN OSTPREUSSENSTRASSE II (.....)	Germany	Aerated Concrete Panelsystem
25/03/1999	5455	22 EFH BV GELSENKIRCHEN KAMPSTRASSE (280016)	Germany	Aerated Concrete Panelsystem
26/03/1999	5456	14 EFH BV AM WULFGRABEN DO-DEUSEN (271500)	Germany	Aerated Concrete Panelsystem
30/03/1999	5461	6 EFH BV GELSENKIRCHEN KORNERSTRASSE (257400)	Germany	Aerated Concrete Panelsystem
30/03/1999	5462	42 EFH BV DORTMUND-HUCKARDE, MAMERTUSSTRASSE (258800)	Germany	Aerated Concrete Panelsystem
30/03/1999	5463	5 MFH BV DORTMUND-HUCKARDE, WESTHUSERNERSTRASSE (903036)	Germany	Aerated Concrete Panelsystem
14/04/1999	5474	5 EFH BV DIETZENBACH, FRANKFURTERSTRASSE 1BA (266000)	Germany	Aerated Concrete Panelsystem
16/04/1999	5477	9 + 4 EFH BV LUDWIGSHAFEN-OGGERSHEIM 3 BA (3.1-3.9/3.26-3.29) (262)	Germany	Aerated Concrete Panelsystem
22/04/1999	5486	47 EFH BV ESSEN STOPPENBERG GROSSWESTERKAMP (.....)	Germany	Aerated Concrete Panelsystem
22/04/1999	5487	22 EFH BV DATTELN "HAGEMER FELD" (266100)	Germany	Aerated Concrete Panelsystem



## AAC related projects

Year	Projectnr	Project	country	System
23/04/1999	5489	8 EFH BV WITTEN AM ANGER (.....)	Germany	Aerated Concrete Panelsystem
11/05/1999	5499	16 EFH BV IDSTEIN, GERBERWEG (.....)	Germany	Aerated Concrete Panelsystem
12/05/1999	5500	16 EFH BV ESSEN-KRAY, SAMMELBAND (280011)	Germany	Aerated Concrete Panelsystem
28/05/1999	5510	28 EFH BV HERNE SCHADEBURGSTRASSE (269400)	Germany	Aerated Concrete Panelsystem
14/06/1999	5526	10 EFH BV CASTROP-RAUXEL AM GRABEN (265100)	Germany	Aerated Concrete Panelsystem
17/06/1999	5528	13 EFH BV CASTROP-RAUXEL ARMINENSTRASSE (265200)	Germany	Aerated Concrete Panelsystem
17/06/1999	5529	2 EFH BV GELSENKIRCHEN HAGENBREDDE (250000)	Germany	Aerated Concrete Panelsystem
18/06/1999	5531	32 EFH BV GLADBECK HAUERWEG/ROTGERSBANK (243700)	Germany	Aerated Concrete Panelsystem
29/06/1999	5553	14 EFH BV BRECKERFELD GENCAYER STRASSE (280012-001)	Germany	Aerated Concrete Panelsystem
16/07/1999	5564	6 EFH BV BOCHUM, PFARRER-KRAMERSTRASSE (258300)	Germany	Aerated Concrete Panelsystem
28/07/1999	5569	12 KEH BOCHUM, BRAUNSBERGER STRASSE (280034)	Germany	Aerated Concrete Panelsystem
30/07/1999	5570	21 KEH DORTMUND-OESTRICH (D), SCHAERENHOF, 2.BA (271800-000)	Germany	Aerated Concrete Panelsystem
30/07/1999	5571	NEU-VILICH,BONN-BEUEL(D),MARIA MONTESSORI ALLEE.,3.BA (280030)	Germany	Aerated Concrete Panelsystem
19/08/1999	5576	AM GRABEN ILANDSTRASSE, 2.BA, 7 WE CASTROP-RAUXEL (265100)	Germany	Aerated Concrete Panelsystem
06-09-99	5594	22 EFH BV HERNE GARTENSTRASSE (280017)	Germany	Aerated Concrete Panelsystem
08-09-99	5598	7 EFH BV HERNE, HORSTSTRASSE (280018)	Germany	Aerated Concrete Panelsystem
07-10-99	5623	NIEUWBOUW WONING FAM. WALLAST TE VLISSINGEN (99-058)	Germany	Aerated Concrete Panelsystem
18-10-99	5629	42 EFH BV BONN-BEUEL MARIA-MONTESSORI-ALLEE 4 BA (280030-004)	Germany	Aerated Concrete Panelsystem
19-10-99	5631	43 EFH BV GELSENKIRCHEN HASELNUSSWEG (256300-000)	Germany	Aerated Concrete Panelsystem
28-10-99	5641	8 EFH BV KAMEN AUGUST BEBEL STRASSE (.....)	Germany	Aerated Concrete Panelsystem
02-11-99	5644	10 EFH BV ESSEN ZOLLVEREIN 4 BA (264300-004)	Germany	Aerated Concrete Panelsystem
05-11-99	5649	10 EFH BV MULHEIM WOHNWERTPARK WRANGELSTRASSE 1BA (.....)	Germany	Aerated Concrete Panelsystem
17-11-99	5664	22 EFH BV CASTROP-RAUXEL AM GRABEN 3 BA (265100)	Germany	Aerated Concrete Panelsystem
24-11-99	5672	10 EFH BV GRILLOSTRASSE/FLOZWEG KAMEN (280072)	Germany	Aerated Concrete Panelsystem
26-11-99	5674	6 EFH BV WITTEN, NOELLESTRASSE (280068)	Germany	Aerated Concrete Panelsystem
26-11-99	5675	5 EFH BV HATTINGEN, NECKARSTRASSE (280075)	Germany	Aerated Concrete Panelsystem
26-11-99	5676	6 EFH BV BOCHUM, REIMKESTRASSE (280080)	Germany	Aerated Concrete Panelsystem
30-11-99	5681	10 EFH BV MULHEIM SAARNER KUPPE B2 B.V.S-STRASSE (262600)	Germany	Aerated Concrete Panelsystem
30-11-99	5682	6 EFH BV MULHEIM SAARNER KUPPE B3 B.V.S.-STRASSE (262700)	Germany	Aerated Concrete Panelsystem
06-12-99	5688	54 EFH BV DORTMUND MENLINGHAUSERSTRASSE (.....)	Germany	Aerated Concrete Panelsystem
04-01-00	5706	23 EFH BV WURZBURG / ROTTENBAUER LINDENSTRASSE (.....)	Germany	Aerated Concrete Panelsystem
04-01-00	5707	32 EFH BV HANAU / KLEIN AUHEIM (255600-002-00)	Germany	Aerated Concrete Panelsystem
11-01-00	5710	8 EFH BV HERNE, SANDWEG (280114)	Germany	Aerated Concrete Panelsystem





## AAC related projects

Year	Projectnr	Project	country	System
11-01-00	5711	12 EFH BV BOCHUM, HOCHWEIDE (280081)	Germany	Aerated Concrete Panelsystem
17-01-00	5719	41 EFH BV HERNE, PLUTOSTRASSE (265600)	Germany	Aerated Concrete Panelsystem
17-01-00	5722	53 EFH BV DUSSELDORF HELLERHOF (257300)	Germany	Aerated Concrete Panelsystem
24-01-00	5728	33 EFH 1BA BV NIEDERKASSEL-LULSDORF (280037) WWP AM ZANDOFERW	Germany	Aerated Concrete Panelsystem
31-01-00	5733	19 EFH BV BERGKAMEN FICHTESTRASSE (280043)	Germany	Aerated Concrete Panelsystem
01-02-00	5737	30 EFH BV BOTTROP ANTON BRANDTWEG (280093) 1BA	Germany	Aerated Concrete Panelsystem
01-02-00	5738	5 EFH BV MULHEIM SAARNER KUPPE BVS STR 2 BIS 10 (262500)	Germany	Aerated Concrete Panelsystem
03-02-00	5742	10 EFH BV BONN-BEUEL WWP MARIA MONTESS. ALLEE (280030-004)	Germany	Aerated Concrete Panelsystem
10-02-00	5747	23 EFH BV WALTROP VELSENSTRASSE 1 BA (280107)	Germany	Aerated Concrete Panelsystem
17-02-00	5754	9 EFH BV RECKLINGHAUSEN, DORIDERWEG (280106)	Germany	Aerated Concrete Panelsystem
18-02-00	5756	9 (49) EFH BV KREFELD, AM SCHICKSBAUM (DG-280103-099)	Germany	Aerated Concrete Panelsystem
18-02-00	5757	4 EFH BV GELSENKIRCHEN, ROBERTSWEG (280085-001)	Germany	Aerated Concrete Panelsystem
18-02-00	5758	8 EFH BV GELSENKIRCHEN, FRONENSTRASSE (280083-001)	Germany	Aerated Concrete Panelsystem
18-02-00	5759	15 EFH BV GLADBECK, HUNDSRUCKSTRASSE (DG-280082-001)	Germany	Aerated Concrete Panelsystem
25-02-00	5773	9 EFH BV HANAU-KLEIN AUHEIM (DE-255600-.....)	Germany	Aerated Concrete Panelsystem
02-03-00	5780	6 EFH BV IDSTEIN GERBERWEG (280044-002)	Germany	Aerated Concrete Panelsystem
02-03-00	5781	8 EFH BV HALTERN-LIPPRAMSDORF, DORSTENER STR. (280105)	Germany	Aerated Concrete Panelsystem
07-03-00	5785	3 EFH BV BOCHUM, MAGDALENENSTRASSE (280121)	Germany	Aerated Concrete Panelsystem
07-03-00	5786	6 EFH BV BOCHUM, RITTERSHAUSSTRASSE (280122)	Germany	Aerated Concrete Panelsystem
13-03-00	5797	44 EFH BV BONN BAD GODESBERG (280069)	Germany	Aerated Concrete Panelsystem
15-03-00	5800	16 EFH BV ESSEN, SCHACHT-KRONPRINZ-STRASSE (268700)	Germany	Aerated Concrete Panelsystem
17-03-00	5802	23 EFH BV WALTROP VELSENSTRASSE 2 BA (280107-002)	Germany	Aerated Concrete Panelsystem
21-03-00	5805	8 EFH BV DORTMUND-MARTEN, RANDEBROCKSTRASSE 1BA (247500)	Germany	Aerated Concrete Panelsystem
22-03-00	5806	NIEUWBOUW WONING FAMILIE DE JAGER HET RAAN RAALTE (00019)	Germany	Aerated Concrete Panelsystem
23-03-00	5808	8 EFH BV ESSEN-KATERNBERG, JOSEPH OERTGENWEG (280078-001)	Germany	Aerated Concrete Panelsystem
23-03-00	5810	5 EFH BV LUDWIGSHAFEN-OGGERSHEIM (HAUS 13-17) (3.10-3.14)	Germany	Aerated Concrete Panelsystem
04/04/2000	5820	2 EFH BV GELSENKIRCHEN KRUMMERWEG (280033-01-B)	Germany	Aerated Concrete Panelsystem
04/04/2000	5821	2 EFH BV GELSENKIRCHEN VALENTINSTRASSE (280032-01-A)	Germany	Aerated Concrete Panelsystem
17/04/2000	5825	10 EFH BV DORTMUND EUGEN RICHTERSTRASSE (269100-004)	Germany	Aerated Concrete Panelsystem
18/04/2000	5827	STAAL + STABILITEIT WONING FAMILIE VAN DE BOGERD TE BERGSCHENHC	Germany	Aerated Concrete Panelsystem
20/04/2000	5828	8 EFH BV BOCHUM LOHRHEIDESTRASSE ESPENLOH (280123)	Germany	Aerated Concrete Panelsystem
20/04/2000	5830	32 (20 + 12) EFH BV DRESDEN-LEUBEN 2 BA + 3 BA (264100)	Germany	Aerated Concrete Panelsystem
21/04/2000	5831	8 EFH BV BOTTROP HULS GELANDE II (DG-280093-002) ANTON BRANDTWE	Germany	Aerated Concrete Panelsystem



## AAC related projects

Year	Projectnr	Project	country	System
02/05/2000	5840	14 EFH BV DORTMUND-MENGEDE KATHE-KOLLWITZ 2 BA (DE-260400-000)	Germany	Aerated Concrete Panelsystem
15/05/2000	5857	2 EFH BV GELSENKIRCHEN-KASSEL LESSINGSTRASSE (.....)	Germany	Aerated Concrete Panelsystem
17/05/2000	5858	2 EFH BV HERNE, VEREINSTRASSE (280125)	Germany	Aerated Concrete Panelsystem
17/05/2000	5860	22 EFH BV DORTMUND MAMERTUSSTRASSE 2 BA (258800-002)	Germany	Aerated Concrete Panelsystem
18/05/2000	5862	3 EFH BV GLADBECK UFERSTRASSE (280092)	Germany	Aerated Concrete Panelsystem
26/05/2000	5867	12 EFH BV DORTMUND SCHARENHOF 3 BA (271800-003)	Germany	Aerated Concrete Panelsystem
29/05/2000	5869	6 EFH BV MULHEIM SAARNER KUPPE B4 B.V.S.-STRASSE (262800)	Germany	Aerated Concrete Panelsystem
09/06/2000	5889	22 EFH BV BOCHUM OSTPREUßENSTRASSE 1 BA (280042-001)	Germany	Aerated Concrete Panelsystem
03/07/2000	5903	10 EFH BV MULHEIM DICKEBANK-HARDENBERGSTRASSE (280148-001)	Germany	Aerated Concrete Panelsystem
11/07/2000	5910	10 EFH BV KAMEN VON GALENSTRASSE 1 BA (1.1-1.10) (280028)	Germany	Aerated Concrete Panelsystem
18/07/2000	5917	21 EFH BV DORTMUND-MENGLINGHAUSERSTRASSE (248000-002)	Germany	Aerated Concrete Panelsystem
21/07/2000	5922	10 EFH BV BOTTROP HULS-GELANDE 3 BA (280093-003)	Germany	Aerated Concrete Panelsystem
24/07/2000	5925	2 EFH BV HERTEN RINGSTRASSE (280168)	Germany	Aerated Concrete Panelsystem
25/07/2000	5926	2 x 4 EFH BV RECKLINGHAUSEN, ELPERWEG (280111)	Germany	Aerated Concrete Panelsystem
31/07/2000	5928	14 EFH BV LEIPZIG PROBSTHEIDA CURSCHMANNSTRASSE (224 D)	Germany	Aerated Concrete Panelsystem
10/08/2000	5929	29 EFH BV BENEDIKTINERSTRASSE DORTMUND	Germany	Aerated Concrete Panelsystem
14/08/2000	5932	51 EFH BV BONN-BEUEL MARIA-MONTESSORI-ALLEE 5 BA (280030-005)	Germany	Aerated Concrete Panelsystem
15/08/2000	5933	12 EFH BV BACKUMER TAL HERTEN, BA 4.1. (252000-001)	Germany	Aerated Concrete Panelsystem
15/08/2000	5934	2 EFH BV HERTEN WILHELMINENSTRASSE (280164)	Germany	Aerated Concrete Panelsystem
15/08/2000	5935	2 EFH BV HERTEN ACKERSTRASSE (280165)	Germany	Aerated Concrete Panelsystem
15/08/2000	5936	2 EFH BV HERTEN LANGENBOCHUMERSTRASSE (280166)	Germany	Aerated Concrete Panelsystem
12/09/2000	5952	16 EFH BV HERTEN BEHRENSTRASSE/JAHNSTRASSE (280143)	Germany	Aerated Concrete Panelsystem
12/09/2000	5953	40 EFH BV NIEDERKASSEL-LULSDORF WWP (280037-002)	Germany	Aerated Concrete Panelsystem
12/10/2000	5986	46 EFH BV HERNE, MEMELERSTRASSE / BRUCHSTRASSE	Germany	Aerated Concrete Panelsystem
13/10/2000	5988	15 EFH BV HERTEN REENERSTRASSE/METTERS-DORFERWEG (280172)	Germany	Aerated Concrete Panelsystem
30/10/2000	6001	20 EFH BV WOHN WERT PARK BRUHL BA 6 + 7 (.....)	Germany	Aerated Concrete Panelsystem
14/11/2000	6011	6 EFH BV MULHEIM SAARNER KUPPE B.V.S.-STR. HS 54-64 (262900)	Germany	Aerated Concrete Panelsystem
14/11/2000	6012	6 EFH BV MULHEIM SAARNER KUPPE B.V.S.-STR. HS 54-64 (262900)	Germany	Aerated Concrete Panelsystem
16/11/2000	6015	46 EFH BV ESSEN WOHNWERTPARK ZOLLVEREIN 5 BA (DG-280054-001)	Germany	Aerated Concrete Panelsystem
24/11/2000	6021	10 EFH BV GELSENKIRCHEN KAMPSTRASSE/FINKENWEG (280187)	Germany	Aerated Concrete Panelsystem
27/11/2000	6023	12 EFH BV GLADBECK ALFREDSTRASSE (280137-001)	Germany	Aerated Concrete Panelsystem
06/12/2000	6035	26 EFH BV TROISDORF NRW AM KRAUSACKER	Germany	Aerated Concrete Panelsystem
28/12/2000	6049	3 EFH BV BOCHUM JOHANNISBURGERSTRASSE (280248)	Germany	Aerated Concrete Panelsystem





## AAC related projects

Year	Projectnr	Project	country	System
08/01/2001	6050	12 EFH BV DORTMUND SCHARENHOF 4 BA (271800-004)	Germany	Aerated Concrete Panelsystem
10/01/2001	6052	16 EFH BAUVORHABEN ESSEN KARNAP (280257-001)	Germany	Aerated Concrete Panelsystem
10/01/2001	6053	12 EFH BAUVORHABEN ESSEN KRAY (280282-001)	Germany	Aerated Concrete Panelsystem
11/01/2001	6055	41 EFH BV BOTTROP CLEMENS-HOFBAUERSTRASSE (280163-001)	Germany	Aerated Concrete Panelsystem
22/01/2001	6060	8 EFH BV ESSEN-KRAY, BONIFACIUSSTRASSE (280274-001)	Germany	Aerated Concrete Panelsystem
24/01/2001	6066	3 EFH BV ESSEN SCHONEBECK/BEDDINGRADE LOHSTRASSE (280060-001)	Germany	Aerated Concrete Panelsystem
29/01/2001	6069	20 EFH BV DORTMUND-MENGLINGHAUSEN 3BA (248000-003)	Germany	Aerated Concrete Panelsystem
29/01/2001	6070	25 EFH BV BOTTROP ERNST-ENDER-STRASSE(259000-001)	Germany	Aerated Concrete Panelsystem
05/02/2001	6074	19 EFH BV DORTMUND RANDEBROCKSTRASSE 2 BA (247500-002)	Germany	Aerated Concrete Panelsystem
06/02/2001	6076	4 EFH BV BOCHUM HOCHWEIDE 2BA (280295)	Germany	Aerated Concrete Panelsystem
13/02/2001	6082	11 EFH BV ESSEN-KATERNBERG (280283-001)	Germany	Aerated Concrete Panelsystem
14/02/2001	6085	2 EFH BV HATTINGEN FERDINAND-FREILIGRATH-STRASSE (280249)	Germany	Aerated Concrete Panelsystem
14/02/2001	6086	18 EFH BV HERNE IM KATTENBUSCH (280271)	Germany	Aerated Concrete Panelsystem
20/02/2001	6087	7 EFH BV ESSEN-BORBECK, DROGANDSTRASSE (280309-001)	Germany	Aerated Concrete Panelsystem
21/02/2001	6090	6 EFH BV HERNE AM SENGENHOF (280252)	Germany	Aerated Concrete Panelsystem
09/03/2001	6100	3 EFH BV OBERHAUSEN NEUER WEG (280281-001)	Germany	Aerated Concrete Panelsystem
19/03/2001	6110	12 EFH BV SONNENPARK LEIPZIG-PROBSTHEIDA BAUFELD 4H UND 4K	Germany	Aerated Concrete Panelsystem
26/03/2001	6113	4 EFH BV HERNE, AM MUHLENBACH (280293)	Germany	Aerated Concrete Panelsystem
27/03/2001	6115	4 EFH BV MARL, GENDORFERSTRASSE (280209)	Germany	Aerated Concrete Panelsystem
29/03/2001	6118	6 EFH BV BOCHUM MARKSTRASSE/STIEPELERSTRASSE (280238)	Germany	Aerated Concrete Panelsystem
03/04/2001	6124	18 EFH BV GELSENKIRCHEN, FISCHERSTRASSE (280186)	Germany	Aerated Concrete Panelsystem
06/04/2001	6125	10 EFH BV CASTROP-RAUXEL, SCHLENKESTRASSE/ENGELLAUSTR. (280213)	Germany	Aerated Concrete Panelsystem
06/04/2001	6126	4 EFH BV RECKLINGHAUSEN, OSTCHARWEG (280209)	Germany	Aerated Concrete Panelsystem
06/04/2001	6127	2 EFH BV CASTROP-RAUXEL, FALKENSTRASSE (280270)	Germany	Aerated Concrete Panelsystem
06/04/2001	6128	18 EFH BV ESSEN-KRAY, DROSTENBUSCH (280256)	Germany	Aerated Concrete Panelsystem
13/04/2001	6133	17 EFH BV LEIPZIG-SOMMERFELD 1 BA BAUFELD 3-18 UND 3-21	Germany	Aerated Concrete Panelsystem
18/04/2001	6135	6 EFH BV WITTEN, WALDSTRASSE (280239)	Germany	Aerated Concrete Panelsystem
01/05/2001	6140	8 EFH BV ESSEN-KRAY, ACHTERBERGBREDDE/BRAUCKLOH (280289-001)	Germany	Aerated Concrete Panelsystem
01/05/2001	6141	4 EFH BV ESSEN-KRAY, KLUVERSHANG (280291-001)	Germany	Aerated Concrete Panelsystem
08/05/2001	6143	2 EFH BV BOCHUM, AM WIESENPFAD (280315)	Germany	Aerated Concrete Panelsystem
18/05/2001	6153	22 EFH BV RECKLINGHAUSEN WANGEROODESTR BA 1 UND 2 (280145-001)	Germany	Aerated Concrete Panelsystem
29/05/2001	6160	8 EFH BV MUHLHEIM AN DER RUHR BLUCHERSTRASSE (280265-001)	Germany	Aerated Concrete Panelsystem
18/06/2001	6167	2 EFH BV BOCHUM, AM SCHAMBERGE (280327)	Germany	Aerated Concrete Panelsystem





## AAC related projects

Year	Projectnr	Project	country	System
15/08/2001	6190	29 EFH BV BONN-BEUEL MARIA-MONTESSORI-ALLEE 7 BA (280030-007)	Germany	Aerated Concrete Panelsystem
10/09/2001	6199	4 EFH BV GELSENKIRCHEN, BORNESTRASSE	Germany	Aerated Concrete Panelsystem
10/09/2001	6200	19 EFH BV GLADBECK, SCHLAGELSTRASSE (DG-280212-001+002)	Germany	Aerated Concrete Panelsystem
11/09/2001	6201	4 BEHINDERTE WOHNUNGEN BONN-BEUEL MARIA MONTESSORI-ALLEE 7	Germany	Aerated Concrete Panelsystem
21/09/2001	6212	16 EFH BV BOTTROP HULS-GELANDE 4.BA (280093-004)	Germany	Aerated Concrete Panelsystem
12/11/2001	6241	39 EFH BV RATINGEN FELDERHOF 1 BAUABSCHNITT (DG-280306-001)	Germany	Aerated Concrete Panelsystem
20/11/2001	6245	2 EFH BV BOCHUM WESTSTRASSE (DG-280332-001)	Germany	Aerated Concrete Panelsystem
17/12/2001	6258	15 EFH BV GELSENKIRCHEN TIEMANNSWEG (W-05132)	Germany	Aerated Concrete Panelsystem
04/02/2002	6285	16 RH UND 36 DHH IN HATTINGEN WOHNPAK RUHRBLICK (W05099)	Germany	Aerated Concrete Panelsystem
04/02/2002	6286	4 DHH NEUSS-ALLERHEILIGEN (W05502)	Germany	Aerated Concrete Panelsystem
12/02/2002	6289	17 EFH BV GELSENKIRCHEN IM BAHNWINKEL (280097)	Germany	Aerated Concrete Panelsystem
27/02/2002	6300	BV KOLN JUNKERSDORF BF 24 HANS-KATZER-STR (HAUS TREND) (280352-C	Germany	Aerated Concrete Panelsystem
21/03/2002	6314	19 EFH BV BRUHL 6 BA IRMGARD-KEUN-WEG DG-267053-006.3	Germany	Aerated Concrete Panelsystem
27/03/2002	6317	8 + 8 EFH BV ESSEN KARNAP DG-280257-002/003 P FLIEDNER W/KAISERWI	Germany	Aerated Concrete Panelsystem
22/04/2002	6329	10 EFH BV WITTEN PLATANENWEG (BAU-NR. 280346) TYP 4100 - INDEX G	Germany	Aerated Concrete Panelsystem
30/05/2002	6343	14 DHH IN DINSLAKEN, TERHARDTHOF (4 BA) (W 05138)	Germany	Aerated Concrete Panelsystem
20/06/2002	6357	NEUBAU 10 EFH UND 8 RH WEDEL SCHWARTENSEEKAMP/MOORWEG (BO	Germany	Aerated Concrete Panelsystem
16/07/2002	6373	17 EFH DOMINIKUS-BOHM-STR. DG 280 364-001, KOLN SURTH	Germany	Aerated Concrete Panelsystem
17/07/2002	6374	12 EFH JAHNSTRASSE, BOCHUM-WATTENSCHIED	Germany	Aerated Concrete Panelsystem
01/10/2002	6401	7 EFH BV BOTTROP HULS-GELANDE 5 BA (280093-005)	Germany	Aerated Concrete Panelsystem
01/11/2002	6415	37 EFH BV NIEDERKASSEL-LULSDORF 3BA (280037-003) WWP	Germany	Aerated Concrete Panelsystem
08/11/2002	6420	11 WE BV HERNE EISLEBENER STRASSE (E05141) (5986)	Germany	Aerated Concrete Panelsystem
12/11/2002	6422	15 EFH BV RATINGEN FELDERHOF 2E BAUABSCHNITT (DG-280306-002)	Germany	Aerated Concrete Panelsystem
18/11/2002	6426	20 EFH BV BONN-BEUEL MARIA-MONTESSORI-ALLEE 8 BA (280030-008)	Germany	Aerated Concrete Panelsystem
06/12/2002	6443	42 WONINGEN IN PLAN ALTEVEER TE OMMEN	Germany	Aerated Concrete Panelsystem
01/03/2005	6595	De Woerd Netherlands	Netherlands	Aerated Concrete Panelsystem
12/05/2003	6511	16 DOPPELHAUSER IN VELBERT AM THEKBUSCH (S 05114)	Germany	Aerated Concrete Panelsystem
07/06/2007	7046	HERBOUW WONING TECHNOZORG AAN DE MEIJERINKSTRAAT 20 TE EEFD	Germany	Aerated Concrete Panelsystem
03/08/2011	7611	40.000 WONINGEN ANGOLA	Angola	Aerated Concrete Panelsystem
21/09/2011	7618	GOVERNMENT EMPLOYMENT OFFICE BUILDING ANGOLA	Angola	Aerated Concrete Panelsystem
05/01/12	8009	VERVOLG WONINGEN ANGOLA TYPE G EN H	Angola	Aerated Concrete Panelsystem
30/01/13	8092	ILHA PROJECT - STRUCTURAL DESIGN	Angola	Aerated Concrete Panelsystem
01/02/13	8094	MOXICO ANGOLA	Angola	Aerated Concrete Panelsystem



## AAC related projects

Year	Projectnr	Project	country	System
05/02/13	8096	DONDO ANGOLA	Angola	Aerated Concrete Panelsystem
27/03/13	8114	MALANJE AGRI FARM PROJECT	Angola	Aerated Concrete Panelsystem
04/06/13	8125	POLICE STATION - CAMBAXI MALANGE	Angola	Aerated Concrete Panelsystem
08/07/13	8133	POLICESTATION TYPE CANGANDALA - 3 SITES MALANGE	Angola	Aerated Concrete Panelsystem
10/10/13	8156	ANGOLA HOUSING FASE 2 (7611)	Angola	Aerated Concrete Panelsystem
18/11/13	8166	RESEARCH STATIONS ANGOLA	Angola	Aerated Concrete Panelsystem
24/02/14	8183	WATER FOR ALL ANGOLA	Angola	Aerated Concrete Panelsystem
03/11/14	8229	CONDOMINIUM MITRELLI SITE LUANDA ANGOLA	Angola	Aerated Concrete Panelsystem
12/11/14	8237	YOUTHVILLAGE CABIRI ANGOLA	Angola	Aerated Concrete Panelsystem
15/01/15	8241	KORA PUBLIC BUILDING	Angola	Aerated Concrete Panelsystem
10/09/15	8297	APPARTEMENTEN DELFINS BONAIRE	Angola	Aerated Concrete Panelsystem
02/10/15	8306	CATETE LUANDA ANGOLA	Angola	Aerated Concrete Panelsystem
21/04/16	8355	KORA ANGOLA DEVELOPMENT AFRICA	Angola	Aerated Concrete Panelsystem
26/10/16	8416	DELFINS BEACHRESORT BONAIRE	Caribbean	Aerated Concrete Panelsystem
21/03/17	8452	INCREMENTAL HOUSE ANGOLA	Angola	Aerated Concrete Panelsystem
24/10/17	8517	INVESTIGATION SYSTEM AN BUILDINGMATERIALS KORA ANGOLA	Angola	Aerated Concrete Panelsystem
13/11/17	8523	WATER FOR ALL SHOWER STRUCTURES	Angola	Aerated Concrete Panelsystem
20/11/17	8526	VILLA'S DELFINS BONAIRE	Caribbean	Aerated Concrete Panelsystem
26/01/18	8542	APPARTEMENTEN KORA GHANA	Ghana	Aerated Concrete Panelsystem
21/02/18	8558	WATERVILLAS DELFINS BONAIRE	Caribbean	Aerated Concrete Panelsystem
15/05/18	8579	DELFINS BEACHRESORT STUDIO'S	Caribbean	Aerated Concrete Panelsystem
28/06/18	8604	DELFINS BONAIRE UITBREIDING BEACHBAR	Caribbean	Aerated Concrete Panelsystem
05/11/18	8643	MFC BONAIRE	Caribbean	Aerated Concrete Panelsystem
07/12/18	8659	XELLA BOX OPLOSSING	Ivory Coast	Aerated Concrete Panelsystem
20/12/18	8665	HORIZONTE ANGOLA ONDERSTEUNING KORA	Egypt	Aerated Concrete Panelsystem
27/02/19	8685	AAC DEVELOPMENT EGYPT XELLA	Egypt	Aerated Concrete Panelsystem
02/04/19	8692	G + 4 IVORY COAST	Ivory Coast	Aerated Concrete Panelsystem
23/04/19	8703	FIRE APPARTMENT UIGI ANGOLA	Angola	Aerated Concrete Panelsystem
06/06/17	8495	Kigali Masaka Appartments	Rwanda	Aerated Blockwork
29/04/19	8646	Rugarama Housing 2500 appartments	Rwanda	Aerated Blockwork
01/01/19	8670	Zinya Appartments	Rwanda	Aerated Blockwork